

Service Manual

Portable Radio Cassette Recorder

BIG-1000K (SS)



Specifications

(CASSETTE SECTION)

Recording system:	DC bias, 4 track stereo
Erasing system:	Magnet erase
Tape speed:	4.75cm/sec.
Fast forward and rewind time:	150 sec. (C-60 tape)
Frequency response:	80 - 12000Hz

(RADIO SECTION)

Tuning ranges:	FM: 88 - 108 MHz SW2: 8 - 24 MHz SW1: 2.2 - 8 MHz MW: 540 - 1600 kHz
Antennas:	Built-in ferrite bar and telescopic rod antennas

(GENERAL)

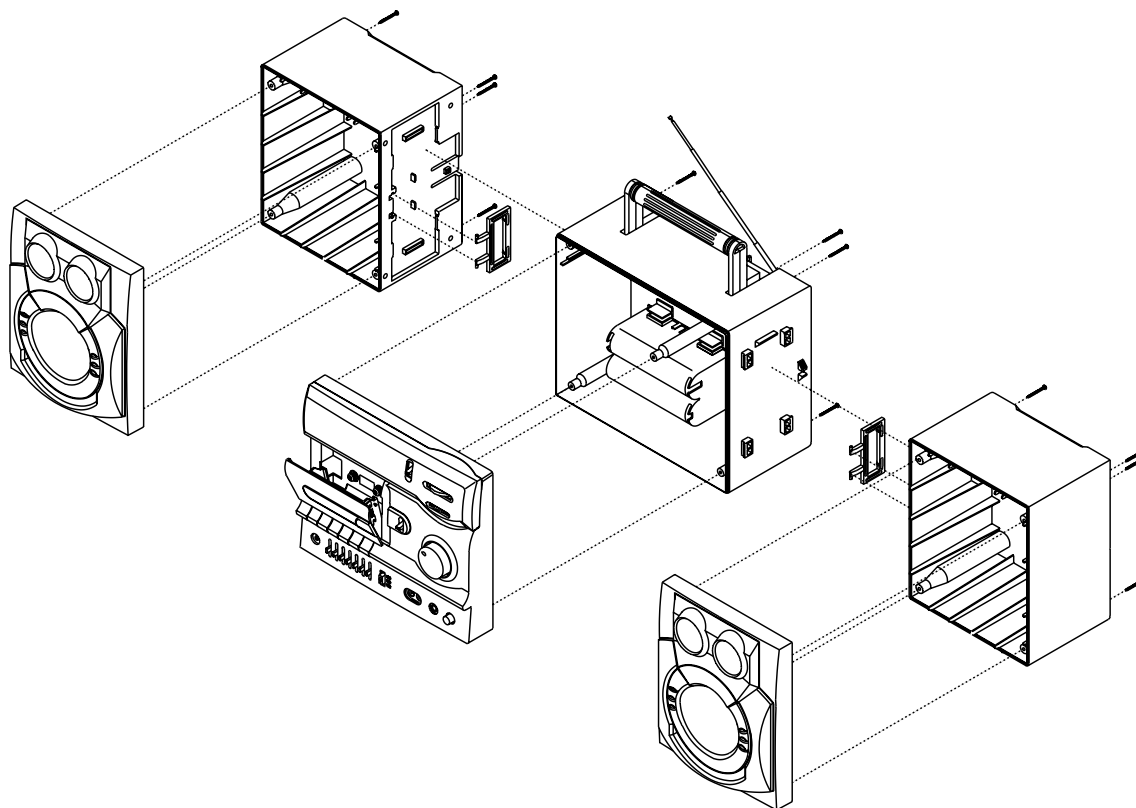
Power output:	140W (P.M.P.O.)
Speaker:	Woofer : 10 cm X 2, 4 ohms Tweeter : 4 cm X 2, 4 ohms
Terminal impedance:	CD/VCD IN: 47k ohms PHONES: 32 ohms
Power source:	AC: 110~120V/220~240V, 50/60Hz DC: 12V (8 "D" size batteries)
Dimensions:	670 x 230 x 190 mm (W x H x D)
Weight (approx.):	5.3kg without batteries

PRODUCT CODE No.
1 164 030 10(SS)

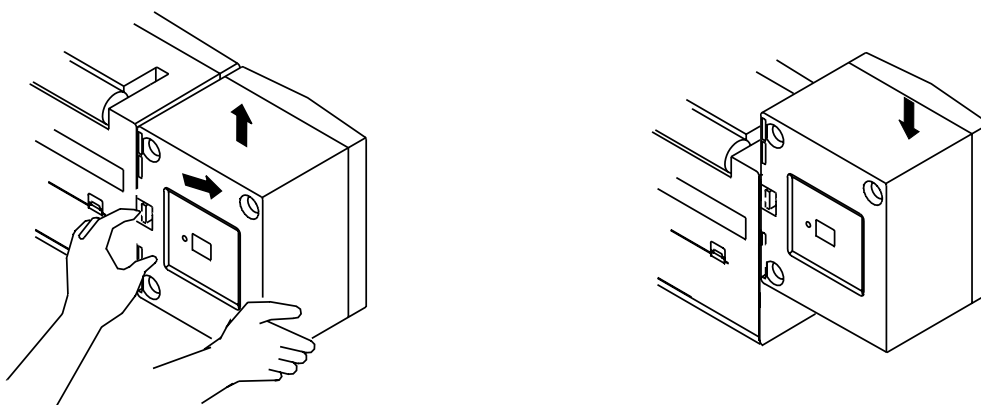
REMOVAL AND INSTALLATION

- Disconnect the power cord's plug from the electrical outlet.
- All wiring should be returned to the original position after works is completed.
- All removal screws have to be re-assembling.
- Arrange the lead wires so that they are not near the heat sink.

1. CABINET



2. SPEAKER BOX RELEASE



ADJUSTMENT

TUNER SECTION

Standard modulation is 1kHz of 400Hz at 30% amplitude for AM and 1kHz or 400Hz at 22.5kHz deviation for FM.

S.S.G.(Standard Signal Generator)

V.T.V.M.(Voltage Meter)

MW Section

Step	Adjustment	Connection	Test Points	S.S.G. Frequency	Adjustment Points	Remarks
1	IFT	Fig.1	TP3,TP4	455kHz (1kHz Mod.)	T102 T103	Adjust for maximum output
2	BAND	Fig.2	TP7,TP8 TP11	525kHz (1kHz Mod.)	T105	Adjust for maximum output
				1650kHz (1kHz Mod.)	PVC (C1)	Adjust for maximum output
3	TRACKING	Fig.2	TP7,TP8 TP11	600kHz (1kHz Mod.)	L105(Bar antenna)	Adjust for maximum output
				1400kHz (1kHz Mod.)	PVC (C2)	Adjust for maximum output

Fig. 1

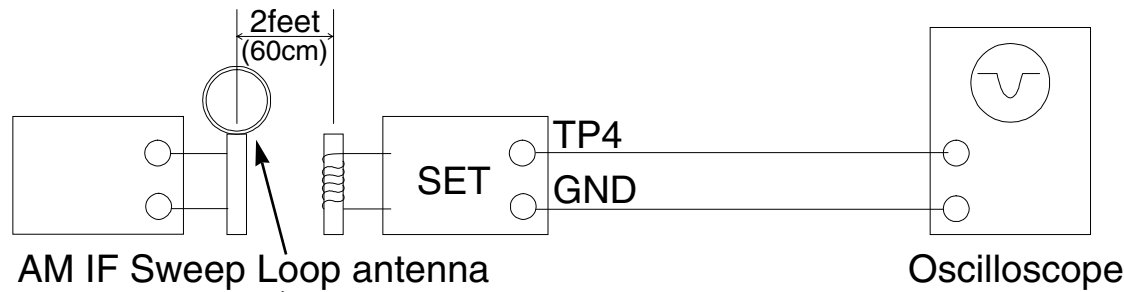
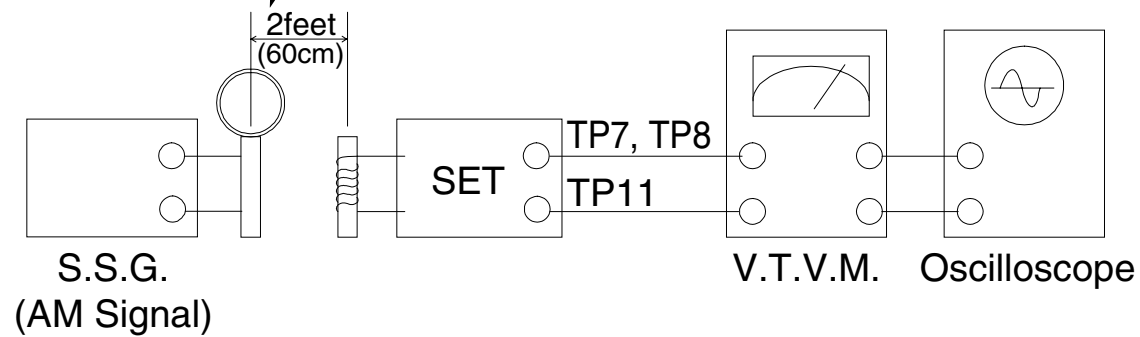


Fig. 2



ADJUSTMENT

FM Section

Step	Adjustment	Connection	Test Points	S.S.G. Frequency	Adjustment Points	Remarks
1	IFT	Fig.3	TP2,TP3 TP4,TP11	10.7MHz	T101 T104	Adjust for maximum output
2	BAND	Fig.4	TP1,TP3 TP7,TP8 TP11	87.35MHz	L104	Adjust for maximum output
				108.3MHz	PVC (C4)	Adjust for maximum output
3	TRACKING	Fig.4	TP1,TP3 TP7,TP8 TP11	90MHz	L102	Adjust for maximum output
				106MHz	PVC (C3)	Adjust for maximum output

Fig. 3

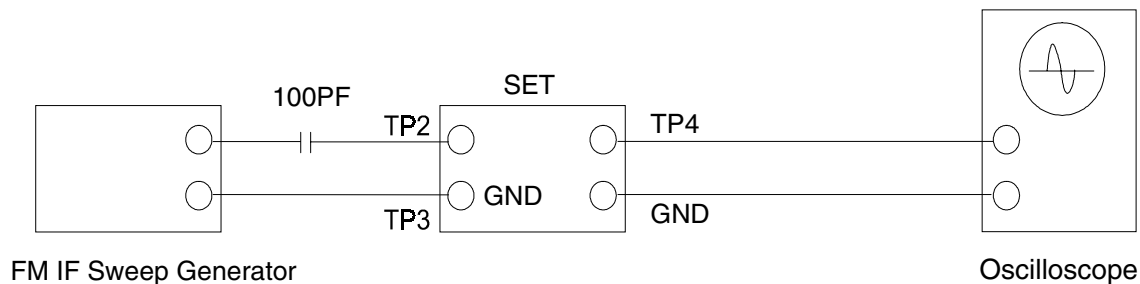
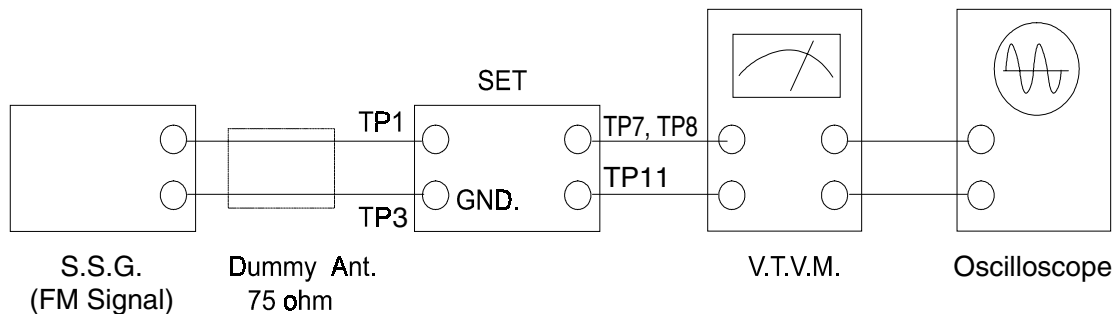


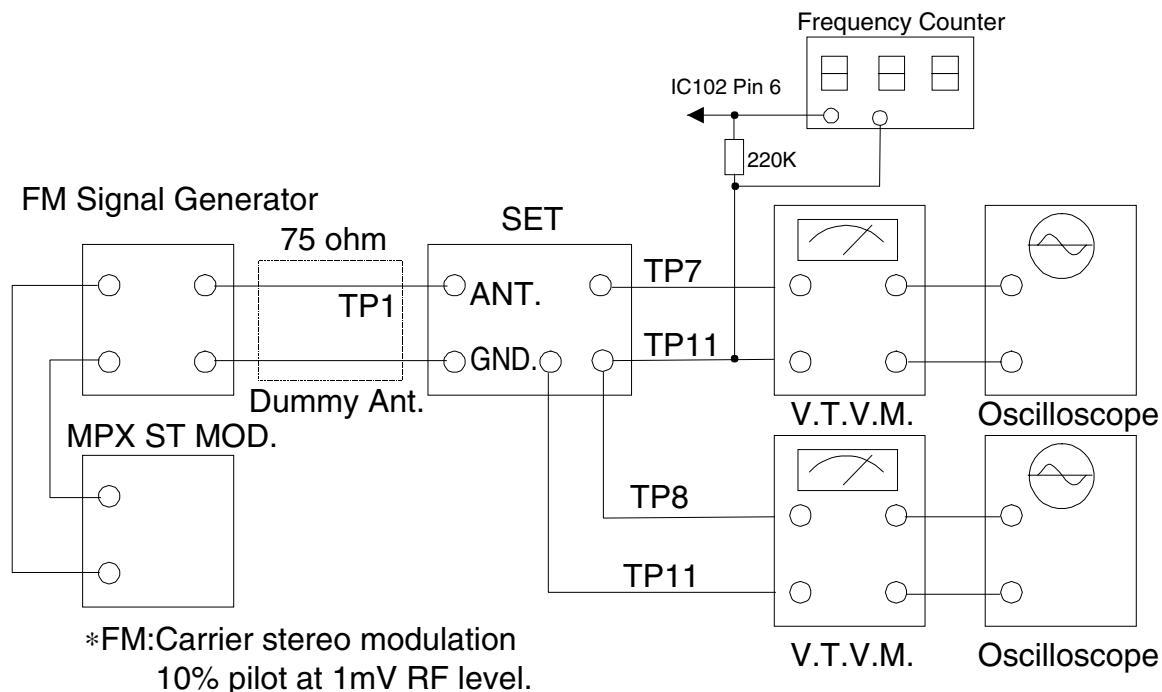
Fig. 4



FM STEREO Section

Step	Adjustment	Connection	Test Points	S.S.G. Frequency	Adjustment Points	Remarks
1	VCO	Fig.5	IC102 Pin6 TP11		VR101	38kHz +/- 40Hz
2	SEPARATION	Fig.5	TP1,TP7 TP8,TP11	Tune to signal		Check either one channel(R or L) output in mimi. reading

Fig. 5

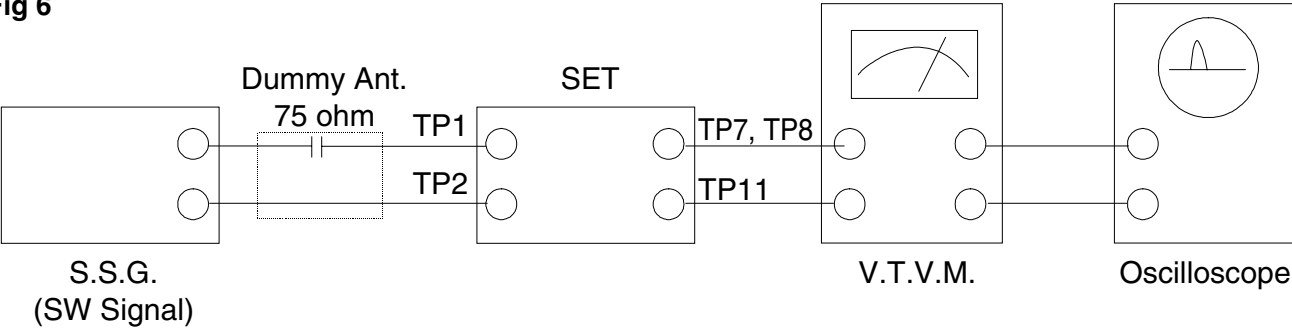


ADJUSTMENT

SW-1 Section

Step	Adjustment	Connection	Test Points	S.S.G. Frequency	Adjustment Points	Remarks
1	BAND	Fig.6	TP1,TP2 TP7,TP8,TP11	2.1MHz (1kHz Mod.)	T106	Adjust for maximum output
				8.5MHz (1kHz Mod.)	CT101	Adjust for maximum output
2	TRACKING	Fig.6	TP1,TP2 TP7,TP8,TP11	3.0MHz (1kHz Mod.)	L106(Bar antenna)	Adjust for maximum output

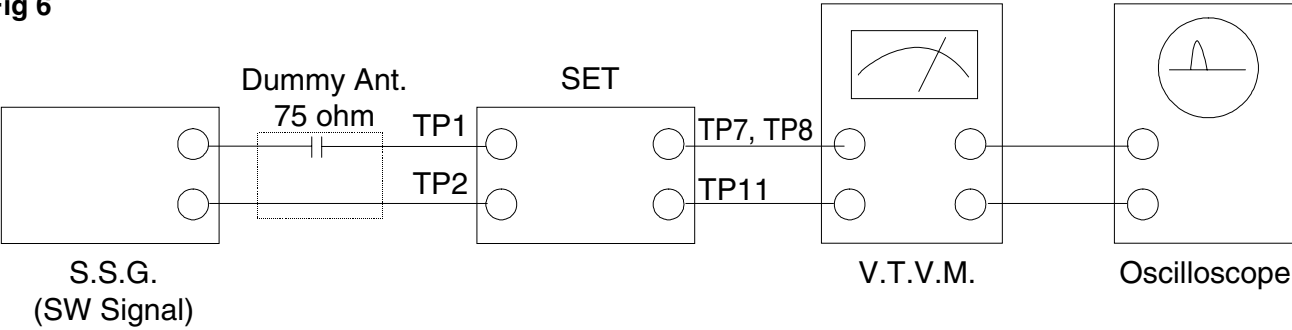
Fig 6



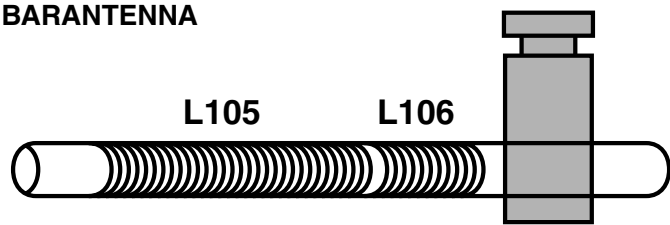
SW-2 Section

Step	Adjustment	Connection	Test Points	S.S.G. Frequency	Adjustment Points	Remarks
1	BAND	Fig.6	TP1,TP2 TP7,TP8,TP11	7.85MHz (1kHz Mod.)	T107	Adjust for maximum output
				24.4MHz (1kHz Mod.)	CT102	Adjust for maximum output
2	TRACKING	Fig.6	TP1,TP2 TP7,TP8,TP11	8.5MHz (1kHz Mod.)	L107	Adjust for maximum output

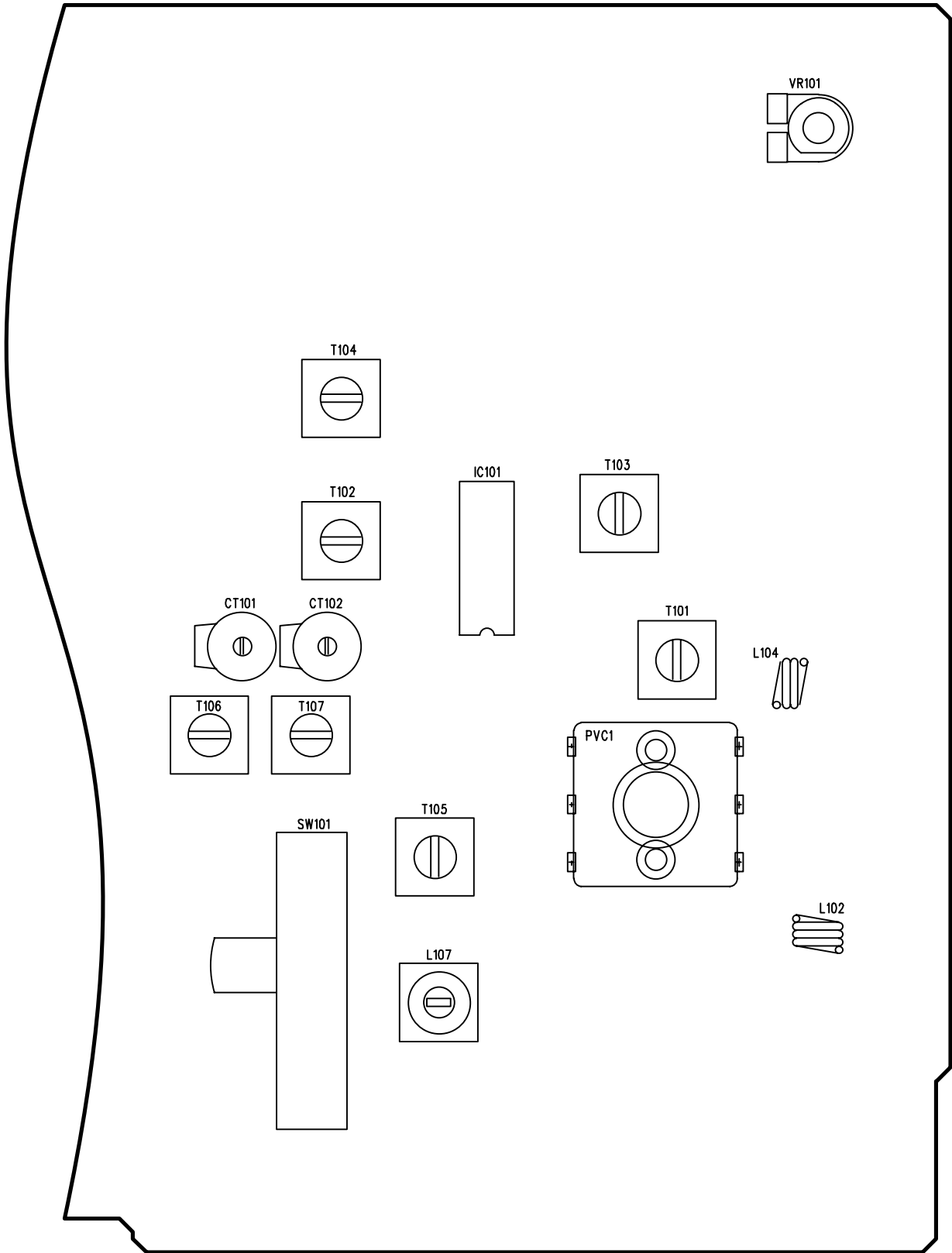
Fig 6



ADJUSTMENT
BARANTENNA



MAIN PCB



ADJUSTMENT

TAPE DECK SECTION

MOTOR SPEED Adjustment

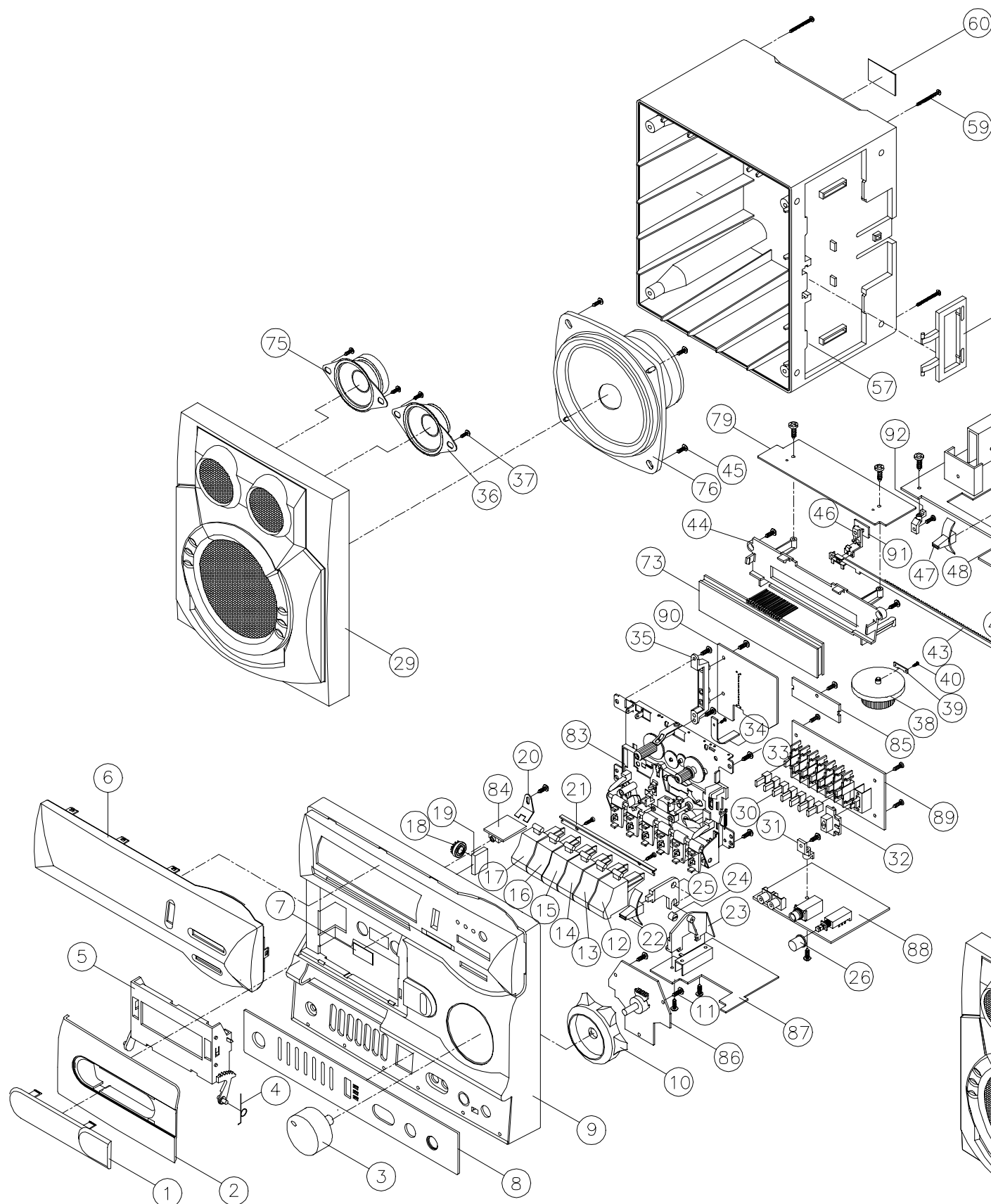
TAPE SPEED Adjustment

1. Insert 3kHz TEST TAPE TO deck adjusts VR of motor speed calibrator to obtain the closing frequency of 3kHz that display at the counter.

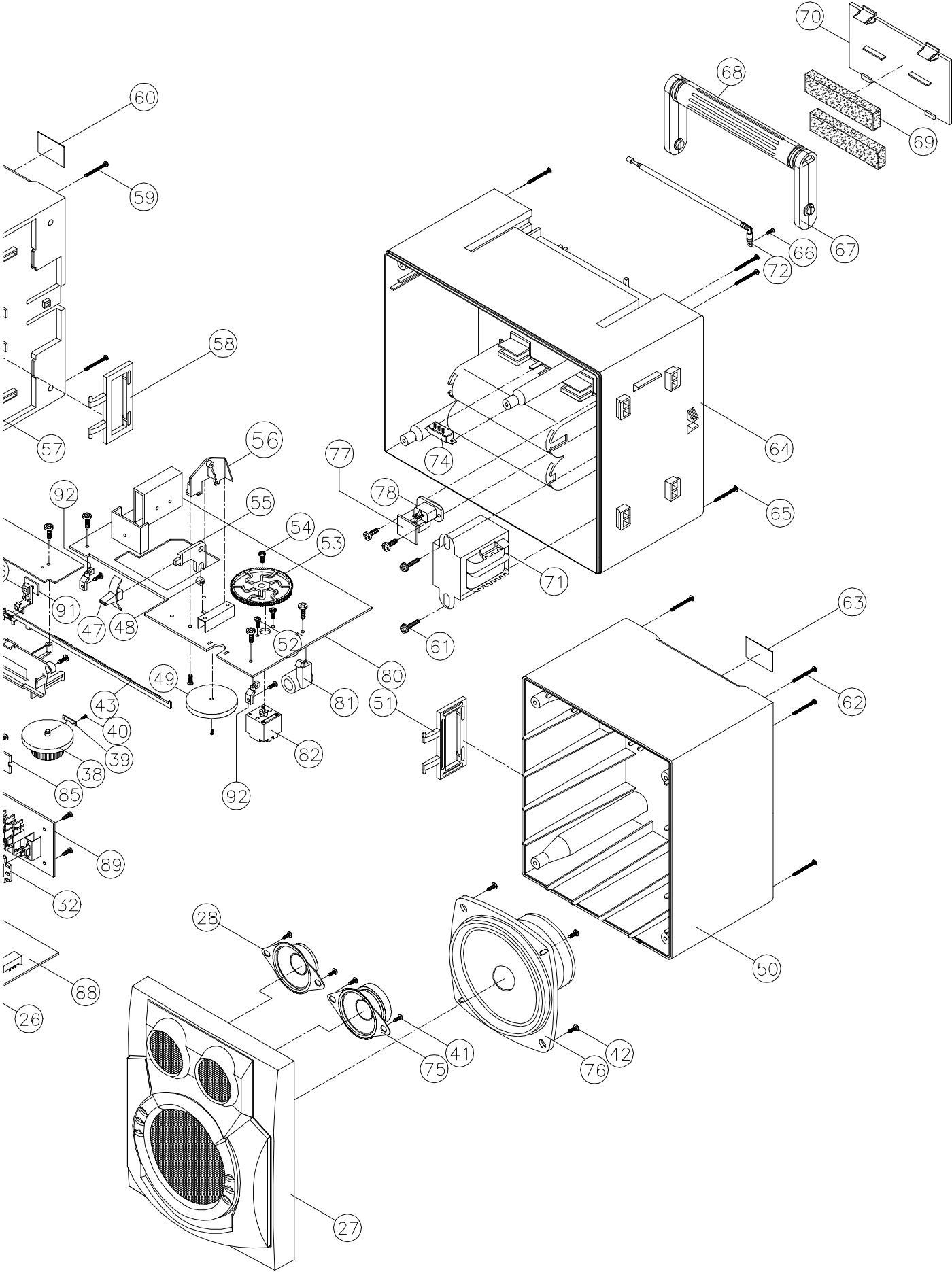
R/P Head Azimuth Adjustment

1. Set the function select switch to tape position.
2. Tune the volume control to max. output position.
3. Insert 6.3kHz or 8kHz Test into deck compartment .(TEAC MTT-113N or MTT-113CN)
4. Adjust the play back head mounting screw to obtain the max. output . Reading at VTVM.

EXPLODED VIEW (CABINET & CHASSIS) (1/2)



EXPLODED VIEW (CABINET & CHASSIS) (2/2)



PARTS LIST

PRODUCT SAFETY NOTICE

EACH PRECAUTION IN THIS MANUAL SHOULD BE FOLLOWED DURING SERVICING. COMPONENTS IDENTIFIED WITH THE IEC SYMBOL \triangle IN THE PARTS LIST AND THE SCHEMATIC DIAGRAM DESIGNATED COMPONENTS IN WHICH SAFETY CAN BE OF SPECIAL SIGNIFICANCE. WHEN REPLACING A COMPONENT IDENTIFIED BY \triangle , USE ONLY THE REPLACEMENT PARTS DESIGNATED, OR PARTS WITH THE SAME RATINGS OF RESISTANCE, WATTAGE OR VOLTAGE THAT ARE DESIGNATED IN THE PARTS LIST IN THIS MANUAL. LEAKAGE-CURRENT OR RESISTANCE MEASUREMENTS MUST BE MADE TO DETERMINE THAT EXPOSED PARTS ARE ACCEPTABLY INSULATED FROM THE SUPPLY CIRCUIT BEFORE RETURNING THE PRODUCT TO THE CUSTOMER.

CAUTION : Regular type resistors and capacitors are not listed. To know those values, refer to the schematic diagram.
Regular type resistors are less than 1/4W carbon and chip type and 0 ohm chip resistors.
Regular type capacitors are less than 50V and less than 1000 μ F of Ceramic and chip type and Electrolytic type.

N.S.P : Not available as service parts.

Ref. No.	Parts No.	Description	Ref. No.	Parts No.	Description
PACKING & ACCESSORIES			48	379-10-0555-0210	SWITCH ADAPTOR
\triangle	838-01-0790-0020	POLYFOAM (TOP-L)	49	354-10-0579-0020	FINE KNOB
	838-01-0790-0060	POLYFOAM (TOP-R)	50	306-02-0770-0000	SPEAKER BACK CABINET
	838-01-0790-0080	POLYFOAM (BOTTOM-L)	51	378-10-0151-0510	SPERKER BOX HANGER
	838-01-0790-0040	POLYFOAM (BOTTOM-R)	52	550-04-2226-0400	MFS 2.6 X 4 (N.S.P)
	184-05-0330-7200	AC POWER CORD	53	382-10-0800-0020	PVC GEAR
	834-01-0800-0000	GIFT BOX	54	550-04-5226-0600	MPS 2.6 X 6 (N.S.P)
	801-01-0800-0000	INSTRUCTION MANUAL	55	372-10-0555-0720	PUSH KNOB BRACKET
CABINET & CHASSIS			56	372-10-0555-0710	SLIDE KNOB BRACKET
1	404-10-0800-0000	CASSETTE DOOR LENS	57	306-02-0770-0000	SPEAKER BACK CABINET
2	318-10-0800-0000	CASSETTE DOOR	58	378-10-0151-0510	SPERKER BOX HANGER
3	356-10-0790-0010	VOLUME KNOB	59	550-24-5130-2500	TPS 3 X 25 (N.S.P)
4	556-20-0010-8718	CASSETTE DOOR SPRING	60	451-03-1128-0010	SPEAKER BOX PLATE 20X30
5	374-10-0668-0060	CASSETTE DOOR BRACKET	61	550-34-5130-2000	TWS 3 X 20 (N.S.P)
6	402-10-0800-0000	DIAL LENS	62	550-24-5130-2500	TPS 3 X 25 (N.S.P)
7	561-00-1010-0140	REFLECTOR PLATE	63	451-03-1128-0010	SPEAKER BOX PLATE 20X30
8	302-10-0800-0000	FUNCTION PANEL	64	301-20-0850-0000	BACK CABINET
9	301-10-0800-0000	FRONT CABINET	65	550-24-5130-2500	TPS 3 X 25 (N.S.P)
10	408-04-0800-0000	VOLUME KNOB LENS	66	550-05-2230-0800	TPS 3 X 8 (N.S.P)
11	550-24-5130-1000	TPS 3 X 10 (N.S.P)	67	324-01-8718-0000	HANDLE FRONT CABINET
12	352-10-0800-2100	PAUSE CASS KNOB	68	324-02-8718-0000	HANDLE BACK CABINET
13	352-10-0800-2200	STOP/EJECT CASS KNOB	69	709-11-0020-0950	SPONGE, BATT. LID
14	352-10-0800-2300	FAST FORWARD CASS KNOB	70	322-01-0010-0000	BATTERY DOOR
15	352-10-0800-2400	REWIND CASS KNOB	92	372-10-0008-0121	PCB BRACKET
16	352-10-0800-2500	PLAY CASS KNOB	ELECTRICAL PARTS		
17	352-10-0800-2900	RECORD CASS KNOB	\triangle 71	181-00-5731-1200	POWER TRANSFORMER
18	384-00-0100-0668	DAMPING GEAR	72	509-21-4600-6000	ROD ANTENNA 4-SEG.
19	383-00-0100-0899	DAMPING HOLDER	73	125-20-5100-5650	VFD DISPLAY
20	571-00-0000-0768	SPEAKER CLIP	\triangle 74	154-00-2220-1000	VOLTAGE SELECT SWITCH
21	562-00-0320-0568	CASSETTE KNOB CLIP	75	177-45-2102-0200	SPEAKER 1.5", 4ohm
22	362-10-0555-0030	FUNTION KNOB	76	177-45-8116-1401	SPEAKER 4", 4ohm
23	372-10-0555-0710	PUSH KNOB BRACKET	AC SOCKET P.W. BOARD ASSY		
24	372-10-0555-0010	SWITCH ADAPTOR	77	101-71-8718-5200	ASSY. PWB. AC SOCKET
25	372-10-0555-0720	SLIDE KNOB BRACKET	\triangle 78	185-15-0201-0090	AC POWER SOCKET
26	364-10-0790-0010	POWER KNOB	D18	117-00-2014-0010	DIODE, 1N4001
27	508-10-3378-7100	SPEAKER GRILLE ASSY	D19	117-00-2014-0010	DIODE, 1N4001
28	316-01-7328-0090	DECORATE SMALL SPEAKER	D20	117-00-2014-0010	DIODE, 1N4001
29	508-30-1001-5100	SPEAKER GRILLE ASSY	D21	117-00-2014-0010	DIODE, 1N4001
30	360-10-0790-0210	EQ KNOB	\triangle F1	174-04-1102-3020	FUSE, AC250V, 2A
31	372-10-8718-0410	EQ BRACKET	\triangle F2	174-04-1102-3020	FUSE, AC250V, 2A
32	358-10-0790-0070	MODE KNOB	DISPLAY P.W. BOARD ASSY		
33	550-34-5130-1000	TWS 3 X 10 (N.S.P)	79	101-71-0800-3303	ASSY.PWB.DISPLAY
34	559-00-0010-0140	RECORD PLATE	CN4	209-06-2520-1110	11PIN WAFER
35	372-10-0008-0120	PCB MOUNTING BRACKET	D1	115-03-0204-1480	DIODE, 1N4148
36	316-01-7328-0090	DECORATE SMALL SPEAKER	D2	115-03-0204-1480	DIODE, 1N4148
37	550-34-5130-0800	TWS 3 X 8 (N.S.P)	D7	115-03-0204-1480	DIODE, 1N4148
38	382-10-0800-0010	TUNING KNOB	D9	115-03-0204-1480	DIODE, 1N4148
39	559-30-0340-0568	TUNING KNOB CLIP	D10	115-03-0204-1480	DIODE, 1N4148
40	550-24-5120-1000	TPS 2.0 X 10 (N.S.P)	IC2	103-13-6884-0010	IC AN6884
41	550-34-5130-0800	TWS 3 X 8 (N.S.P)	Q1	110-54-8050-1920	TR, S8050(NPN)
42	550-34-5130-1000	TWS 3 X 10 (N.S.P)	Q2	110-53-9014-0320	TR. KTC9014C (NPN)
43	386-02-0860-1900	POINTER	Q3	110-53-9015-0321	TR. KTC9015C (PNP)
44	372-10-0800-0410	VFD DISPLAY BRACKET	Q5	110-53-9014-0320	TR. KTC9014C (NPN)
45	550-34-5130-1000	TWS 3 X 10 (N.S.P)			
46	386-03-0860-1000	VFD POINTER HEAD			
47	362-10-0555-0030	FUNCTION KNOB			

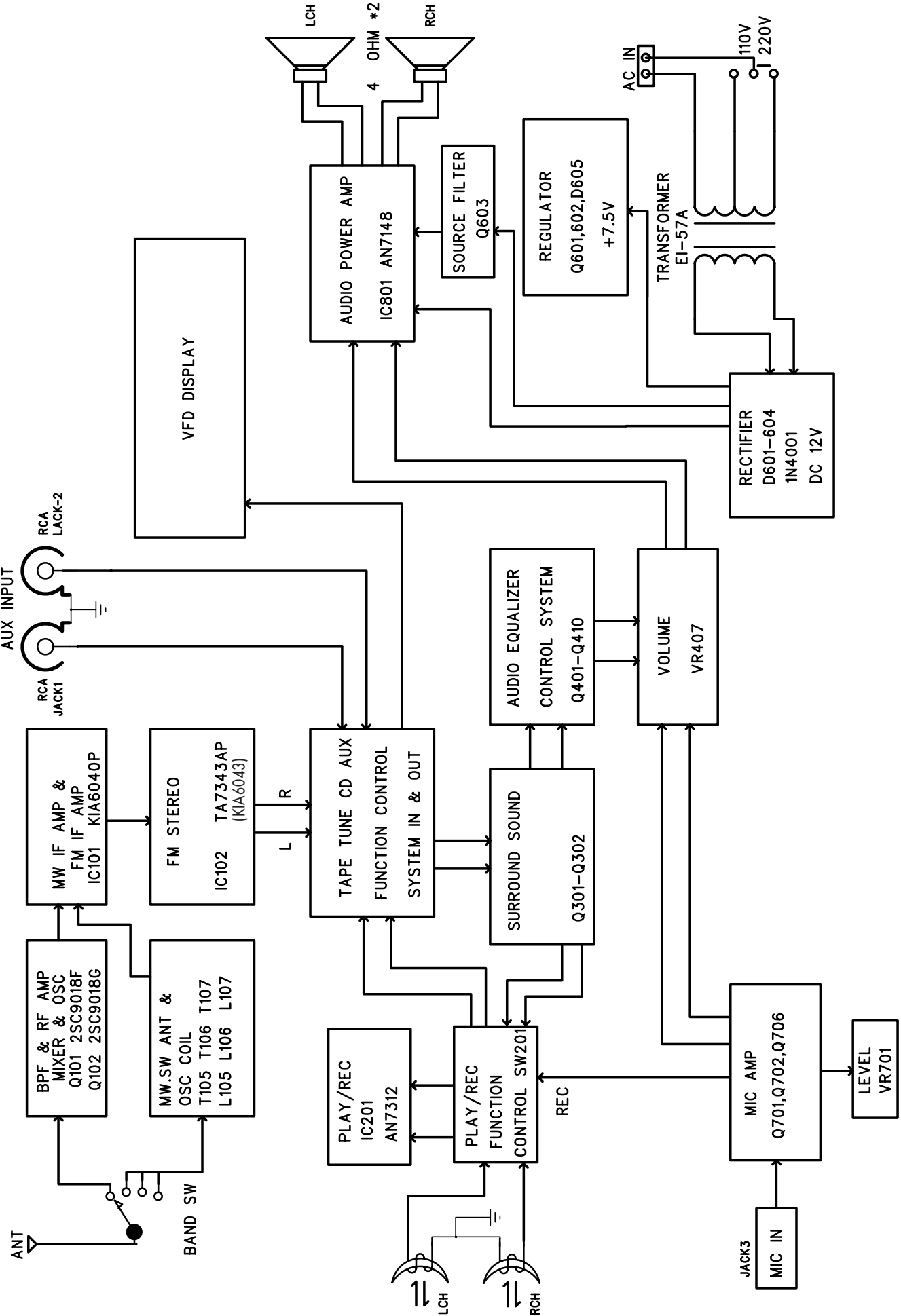
PARTS LIST

Ref. No.	Parts No.	Description	Ref. No.	Parts No.	Description
Q6	110-53-9015-0321	TR. KTC9015C (PNP)	T101	143-10-0110-7010	FM IFT FT-701
Q7	110-53-9014-0320	TR. KTC9014C (NPN)	T102	143-10-0000-5070	AM IFT AT-507
Q8	110-53-9015-0321	TR. KTC9015C (PNP)	T103	143-10-0000-5070	AM IFT AT-507
Q9	110-53-9015-0321	TR. KTC9015C (PNP)	T104	143-10-0110-8020	FM IFT FT-802
Q10	110-53-9014-0320	TR. KTC9014C (NPN)	T105	143-10-0220-1770	AM OSC COIL MO-177
Q11	110-53-9014-0320	TR. KTC9014C (NPN)	T106	143-10-0310-1750	SW1 OSC COIL MO-175
Q12	110-53-9015-0321	TR. KTC9015C (PNP)	T107	143-10-0320-1740	SW2 OSC COIL MO-174
Q13	110-53-9015-0321	TR. KTC9015C (PNP)	VR101	164-04-2002-0050	SEMI-FIXED RESISTOR 5KB
Q14	110-53-9015-0321	TR. KTC9015C (PNP)	VR102	159-35-0004-3502	ROTARY VR, FINE TUNING
Q15	110-53-9015-0321	TR. KTC9015C (PNP)		564-01-0040-8718	HEATSINK (AN7148)
Q16	110-53-9014-0320	TR. KTC9014C (NPN)		147-00-0010-1000	FERRITE BAR ANTENNA
VR1	164-04-2002-0050	SEMI-FIXED VR 5KB			
MAIN P.W. BOARD ASSY			CASSETTE MECHANISM		
80	101-71-0800-3102	ASSY. PWB, MAIN	83	167-13-1055-0210	ASSY. CASS MECHANISM
81	385-04-0310-1000	BRACKET BAR HOLDER		169-21-1200-0200	MOTOR
82	136-20-3088-0000	PVC(PVC1)		168-22-1421-1300	R/P HEAD
C105	196-00-3035-0200	CERAMIC CAP.20pF, NPO		168-40-0230-0000	ERASE HEAD
C107	196-00-3035-0050	CERAMIC CAP.5pF, NPO		347-10-0000-0000	MAIN BELT
C110	196-00-3035-0100	CERAMIC CAP.10pF, NPO		347-10-0000-0001	RF BELT
C116	196-00-3035-0070	CERAMIC CAP.7pF, NPO	PHONES SOCKET P.W. BOARD ASSY		
C146	196-00-3035-0150	CERAMIC CAP.15pF, NPO	84	101-71-0800-3300	ASSY. PWB. PHONES
C150	196-00-3035-0080	CERAMIC CAP.8pF, NPO	J71	187-01-5435-1120	PHONES SOCKET
C151	196-00-3035-0050	CERAMIC CAP.5pF, NPO	S3-1	206-15-0050-2800	FLAT CABLE 5 PIN
C605	200-00-2505-8100	ELE. CAP. 1000uF/250V	POWER LED P.W. BOARD ASSY		
C606	200-00-2505-8100	ELE. CAP. 1000uF/250V	85	101-71-0800-3602	ASSY. PWB. POWER
C805	197-00-3023-4100	MYLAR CAP. 0.1uF	D801	122-01-0322-2700	LED, RED, 3mm DIA.
C811	200-00-1006-8100	ELE. CAP. 1000uF/10V	S6-1	206-15-0020-2200	FLAT CABLE 2 PIN
C812	200-00-1006-8100	ELE. CAP. 1000uF/10V	VOLUME P.W. BOARD ASSY		
C813	197-00-3023-4100	MYLAR CAP. 0.1uF	86	101-71-0800-3402	ASSY. PWB. VOLUME
CF101	131-02-4107-0030	FM CER FILTER, 10.7MHz	D610	122-01-0325-2700	LED, GREEN, 3mm DIA
CNS1	186-01-0430-4010	SPEAKER TERMINAL	D611	122-01-0325-2700	LED, GREEN, 3mm DIA
CT101	137-01-0101-1010	TRIMMER CAP. 10pF	D612	122-01-0325-2700	LED, GREEN, 3mm DIA
CT102	137-01-0101-1010	TRIMMER CAP. 10pF	D613	122-01-0325-2700	LED, GREEN, 3mm DIA
CT103	137-01-0102-2010	TRIMMER CAP. 20pF	S4-1	206-15-0050-2200	FLAT CABLE, 5 PIN
D101	116-03-0101-0430	DIODE, FV1043	VR407	159-32-2152-3201	VOLUME, MAIN
D102	115-03-0204-1480	DIODE, 1N4148	FUNCTION SW P.W. BOARD ASSY		
D103	118-03-4005-0560	ZENER DIODE, 5.6V	87	101-71-0800-3702	ASSY. PWB. FUNCTION SW
D104	115-03-0204-1480	DIODE, 1N4148	S1-4	207-63-0303-1160	FLAT CABLE, 3 PIN
D105	115-03-0204-1480	DIODE, 1N4148	S5	206-15-0140-2600	FLAT CABLE, 14 PIN
D107	115-13-0316-6020	DIODE, 1N60	SW301	148-59-6301-2900	SLIDE SWITCH, 6P3T
D108	115-03-0204-1480	DIODE, 1N4148	POWER SWITCH P.W. BOARD ASSY		
D109	115-03-0204-1480	DIODE, 1N4148	88	101-71-0800-3502	ASSY. PWB, POWER SWITCH
D510	115-03-0204-1480	DIODE, 1N4148	D701	115-03-0204-1480	DIODE, 1N4148
D511	115-03-0204-1480	DIODE, 1N4148	JACK-1	186-02-0128-4050	SOCKET, RCA, WHITE
D523	115-03-0204-1480	DIODE, 1N4148	JACK-3	187-02-2226-3510	SOCKET, 6.3mm DIA. MIC
D605	118-00-4005-0750	ZENER DIODE, 7V6	JACK-2	186-02-0128-4051	SOCKET, RCA, RED
D606	115-03-0204-1480	DIODE, 1N4148	Q701	110-53-9014-0320	TR. KTC9014C (NPN)
D607	115-03-0204-1480	DIODE, 1N4148	Q702	110-53-9014-0320	TR. KTC9014C (NPN)
D608	115-03-0204-1480	DIODE, 1N4148	Q706	110-53-9014-0320	TR. KTC9014C (NPN)
IC101	103-02-6040-0000	IC KIA6040P	S5-1	206-15-0030-2600	FLAT CABLE, 3 PIN
IC102	103-04-6043-0010	IC TA7343AP (or KIA6043)	S5-3	206-15-0050-1200	FLAT CABLE, 5 PIN
IC801	103-07-7148-0010	IC AN7148	S5-4	209-06-2510-0300	3 PIN WAFER
L101	139-00-7045-0450	COIL, 4585	SW602	151-01-0013-3000	PUSH SWITCH, POWER
L102	139-00-7045-0350	COIL, 4584	EQ VOLUME P.W. BOARD ASSY		
L103	139-00-5050-1350	COIL, 5069	89	101-71-0800-3202	ASSY. PWB. EQ VOLUME
L104	139-00-7050-0250	COIL, 4083	C409	197-00-3024-3330	MYLAR CAP. 0.033uF
L105	140-03-0316-0800	COIL, MW ANT80:16T	C410	197-00-3024-3330	MYLAR CAP. 0.033uF
L106	140-07-0405-0170	COIL, SW1 ANT 17:5T	C411	197-00-3024-3680	MYLAR CAP. 0.068uF
L107	142-10-1320-2040	COIL, SW2 RA-204	C412	197-00-3024-3680	MYLAR CAP. 0.068uF
L109	139-00-5050-1350	COIL, 5069	C413	197-00-3024-3200	MYLAR CAP. 0.02uF
Q101	110-52-9018-0620	TR. KTC9018F (NPN)			
Q102	110-52-9018-0720	TR. KTC9018G (NPN)			
Q103	110-53-9015-0321	TR. KTC9015C (PNP)			
Q104	110-53-9014-0320	TR. KTC9014C (NPN)			
Q301	110-53-9014-0320	TR. KTC9014C (NPN)			
Q302	110-53-9014-0320	TR. KTC9014C (NPN)			
Q601	110-04-7720-1651	TR. 2SB8772P (PNP)			
Q602	110-53-9014-0320	TR. KTC9014C (NPN)			
Q603	110-54-8050-1920	TR. S8050 (NPN)			
R112	115-00-0134-7000	DIODE, CDG-00			
R113	115-13-0316-6020	DIODE, 1N60			

PARTS LIST

Ref. No.	Parts No.	Description
C414	197-00-3024-3200	MYLAR CAP. 0.02uF
C415	197-00-3024-3200	MYLAR CAP. 0.02uF
C416	197-00-3024-3200	MYLAR CAP. 0.02uF
C417	197-00-3024-3100	MYLAR CAP. 0.01uF
C418	197-00-3024-3100	MYLAR CAP. 0.01uF
C419	197-00-3024-3120	MYLAR CAP. 0.012uF
C420	197-00-3024-3120	MYLAR CAP. 0.012uF
C421	197-00-3024-2100	MYLAR CAP. 0.001uF
C422	197-00-3024-2100	MYLAR CAP. 0.001uF
C423	197-00-3024-3100	MYLAR CAP. 0.01uF
C424	197-00-3024-3100	MYLAR CAP. 0.01uF
Q401	110-53-9014-0320	TR. KTC9014C (NPN)
Q402	110-53-9014-0320	TR. KTC9014C (NPN)
Q403	110-53-9014-0320	TR. KTC9014C (NPN)
Q404	110-53-9014-0320	TR. KTC9014C (NPN)
Q405	110-53-9014-0320	TR. KTC9014C (NPN)
Q406	110-53-9014-0320	TR. KTC9014C (NPN)
Q407	110-53-9014-0320	TR. KTC9014C (NPN)
Q408	110-53-9014-0320	TR. KTC9014C (NPN)
Q409	110-53-9014-0320	TR. KTC9014C (NPN)
Q410	110-53-9014-0320	TR. KTC9014C (NPN)
S2-2	206-15-0110-2500	FLAT CABLE, 11 PIN
SW302	148-07-4301-2900	SLIDE VOLUME MONO/ST/SUR
VR401	157-20-4042-4100	SLIDE VOLUME, EQ 100KB
VR402	157-20-4042-4100	SLIDE VOLUME, EQ 100KB
VR403	157-20-4042-4100	SLIDE VOLUME, EQ 100KB
VR404	157-20-4042-4100	SLIDE VOLUME, EQ 100KB
VR405	157-20-4042-4100	SLIDE VOLUME, EQ 100KB
VR406	157-20-4042-4100	SLIDE VOLUME, EQ 100KB
VR701	157-20-1042-3500	SLIDE VOLUME, MIC 50KB
CASSETTE P.W. BOARD ASSY		
90	101-71-0800-4202	ASSY. PWB. CASSETTE
C201	197-00-3024-2180	MYLAR CAP. 1800pF
C202	197-00-3024-2180	MYLAR CAP. 1800pF
C204	196-00-3035-0100	CERAMIC CAP.10pF, NPO
C209	197-00-3024-3470	MYLAR CAP. 0.047uF
C210	197-00-3024-2120	MYLAR CAP. 1200pF
C212	196-00-3035-0100	CERAMIC CAP.10pF, NPO
C215	197-00-3024-3470	MYLAR CAP. 0.047uF
C216	197-00-3024-2120	MYLAR CAP. 1200pF
D201	115-03-0204-1480	DIODE, 1N4148
D202	115-03-0204-1480	DIODE, 1N4148
D203	115-03-0204-1480	DIODE, 1N4148
D205	115-03-0204-1480	DIODE, 1N4148
D206	115-03-0204-1480	DIODE, 1N4148
D207	115-03-0204-1480	DIODE, 1N4148
D208	115-03-0204-1480	DIODE, 1N4148
IC201	103-05-7312-0000	IC, AN7312
MIC1	217-01-1032-0800	MINROPHONE
Q201	110-54-8050-0420	TR. 8050D
S1-5	209-06-2510-0300	3 PIN WAFER
S8	206-15-0080-1500	FLAT CABLE, 8 PIN
SW201	150-00-6201-2000	PUSH SWITCH, R/P, 6P2T
T201	144-53-1957-0000	COIL 1957R
VR201	164-04-2002-3100	VR,10KB
POINTER P.W.BOARD ASSY		
91	101-71-0830-7202	ASSY.PWB.POINTER
	122-01-0322-2700	LED, RED, 3mmDIA
	209-06-2510-0200	CABLE, 2 PIN

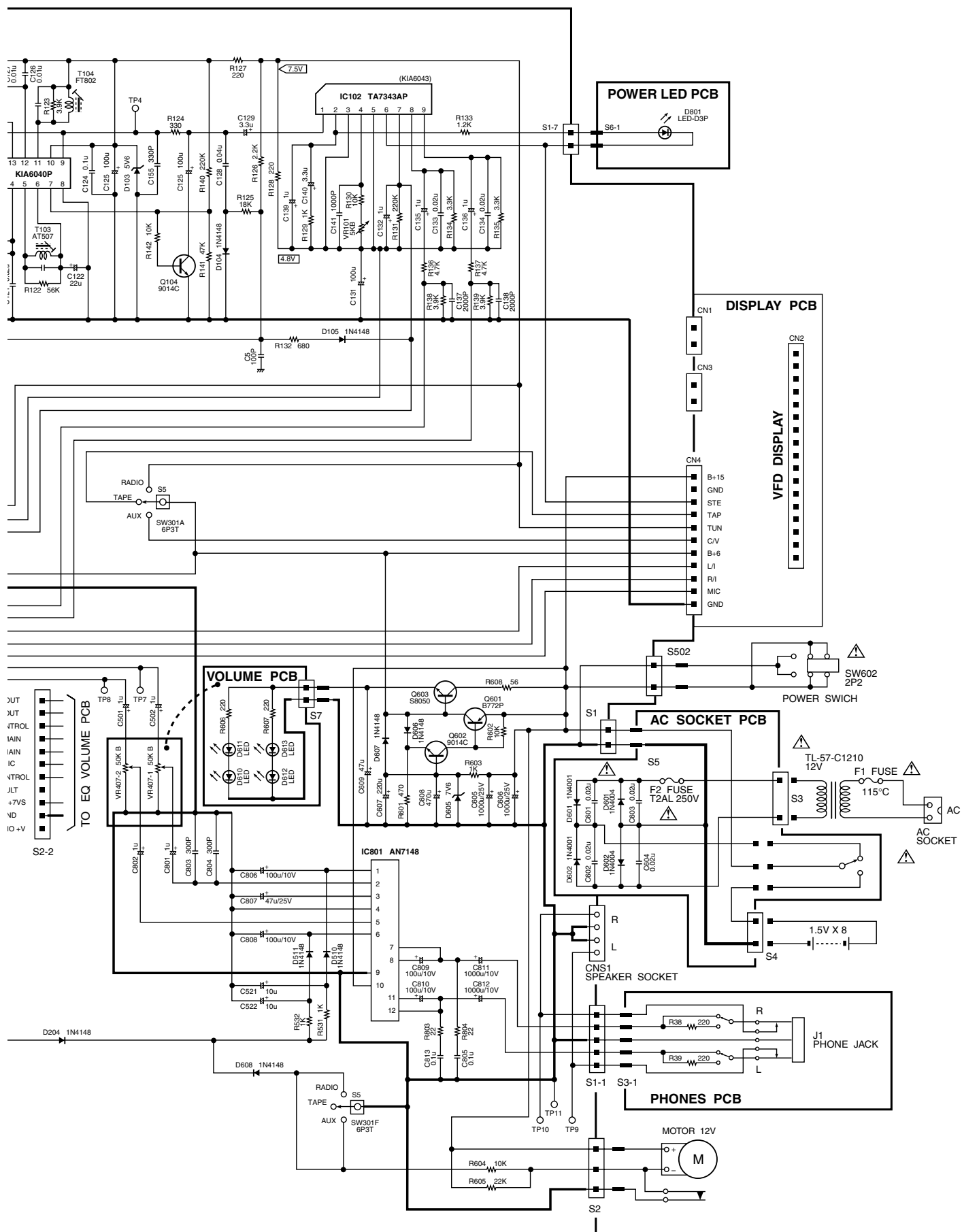
BLOCK DIAGRAM



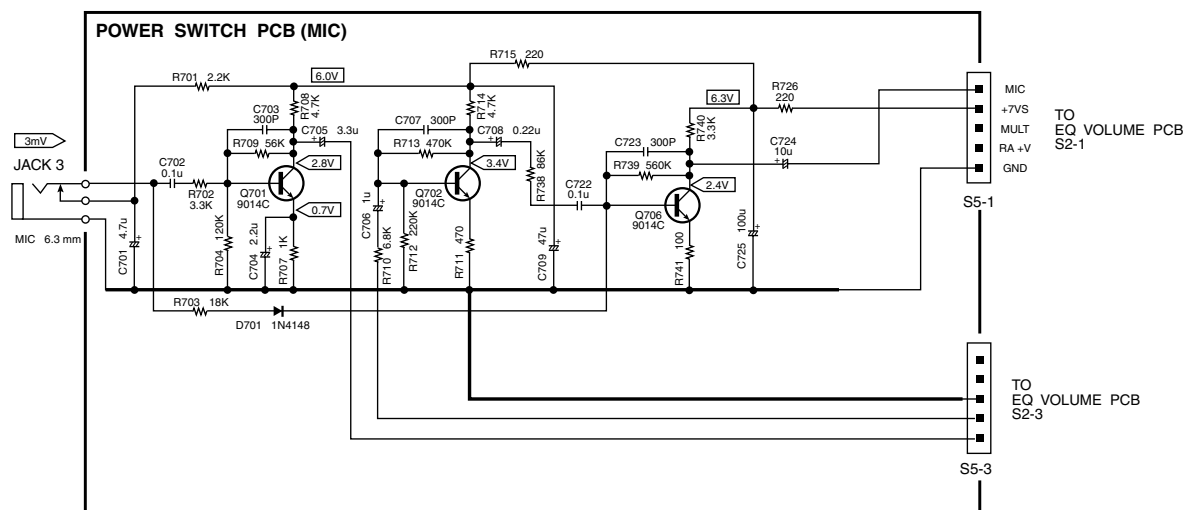
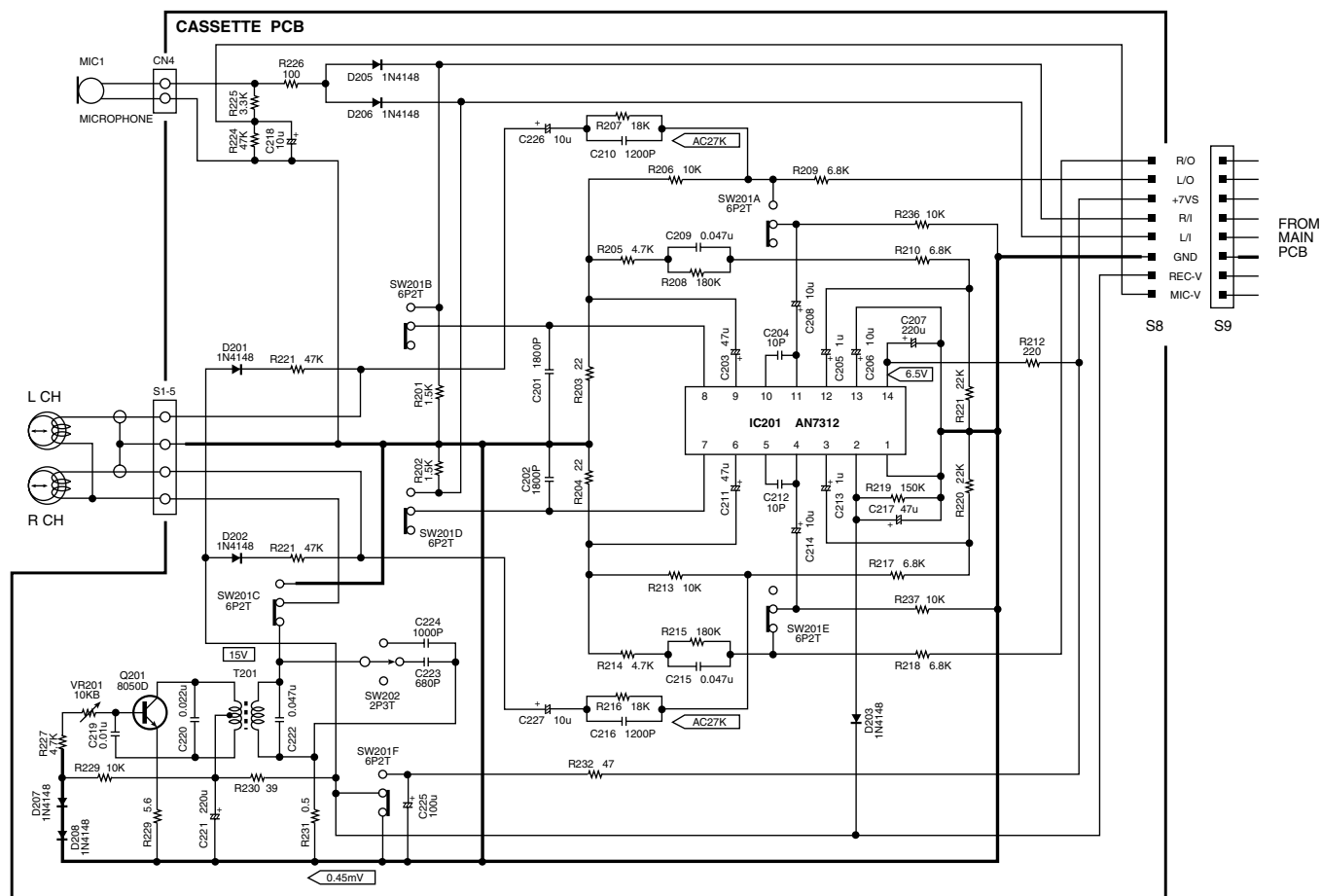
MAIN PCB 1/2



SCHEMATIC DIAGRAM (MAIN PCB 2/2)



SCHEMATIC DIAGRAM (CASSETTE PCB / POWER SWITCH PCB / EQ VOLUME PCB) (1/2) — CASSETE PCB, POWER SWITCH PCB



■ R/O
 ■ L/O
 ■ +7VS
 ■ R/I
 ■ L/I
 ■ GND
 ■ REC-V
 ■ MIC-V

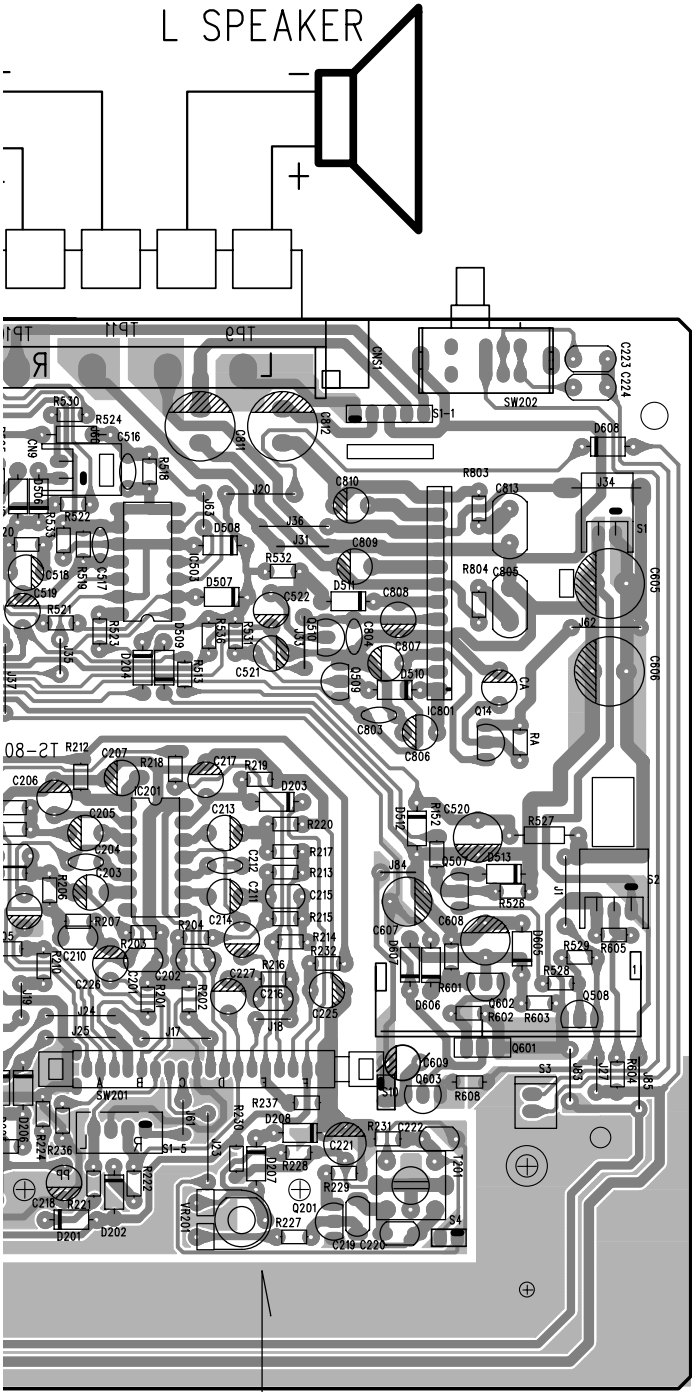
FROM MAIN PCB

38 S9

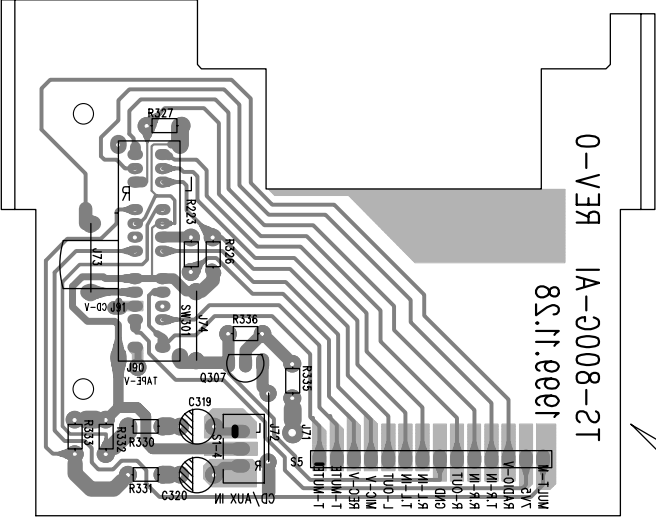
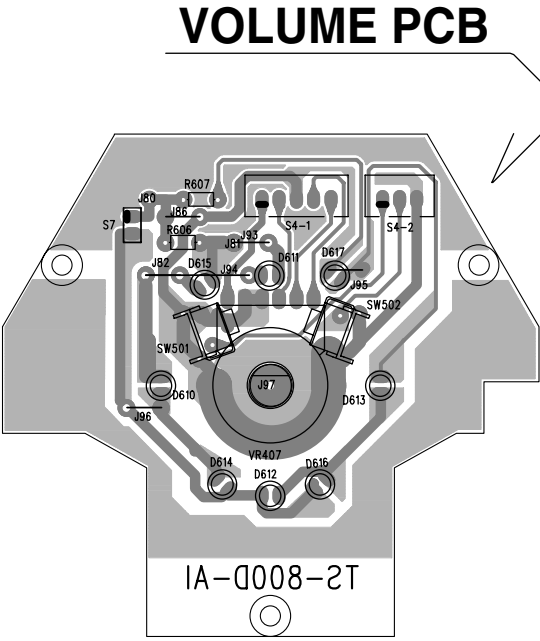


WIRING DIAGRAM (MAIN PCB) (2/2)

CASSETTE PCB, VOLUME PCB, FUNCTION SW PCB



CASSETTE PCB

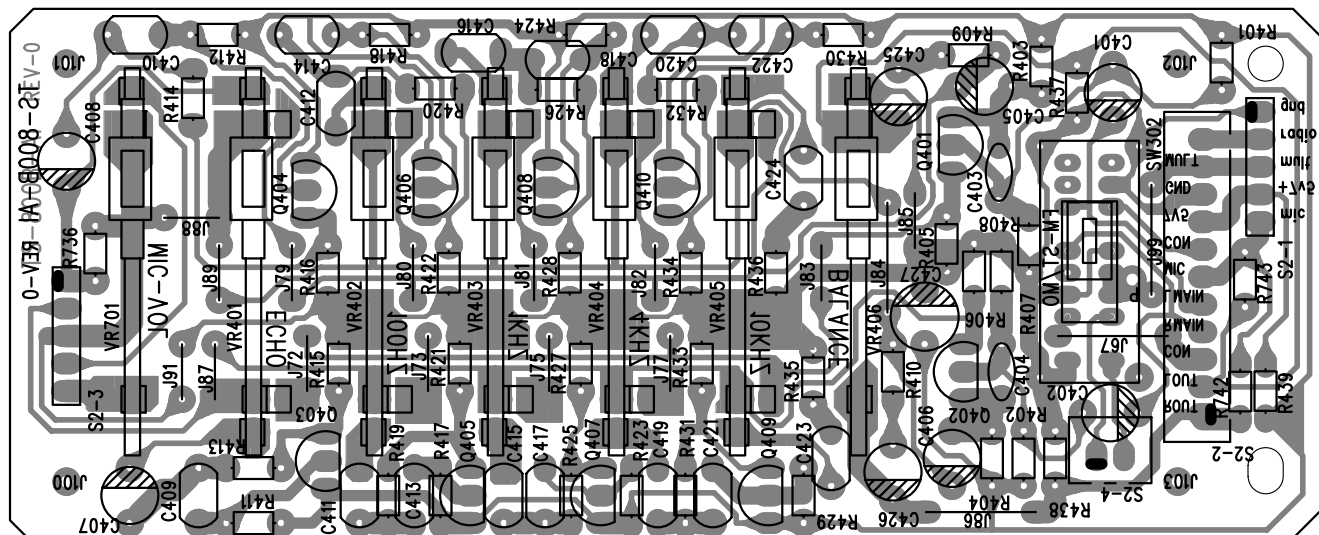


FUNCTION SW PCB

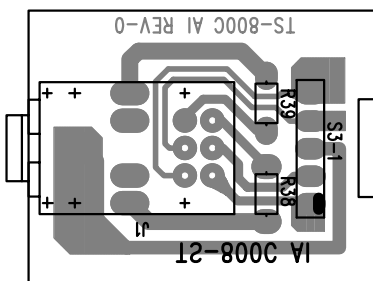
WIRING DIAGRAM (EQ / AUX / MIC PCB)

EQ VOLUME PCB, POWER SWITCH PCB (AUX / MIC), PHONES PCB, POWER LED PCB

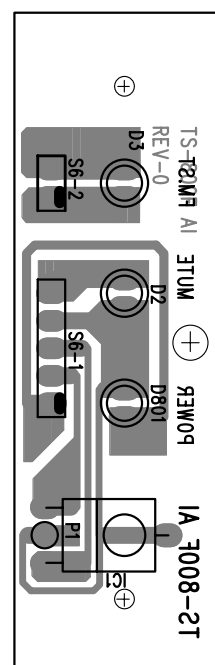
EQ VOLUME PCB



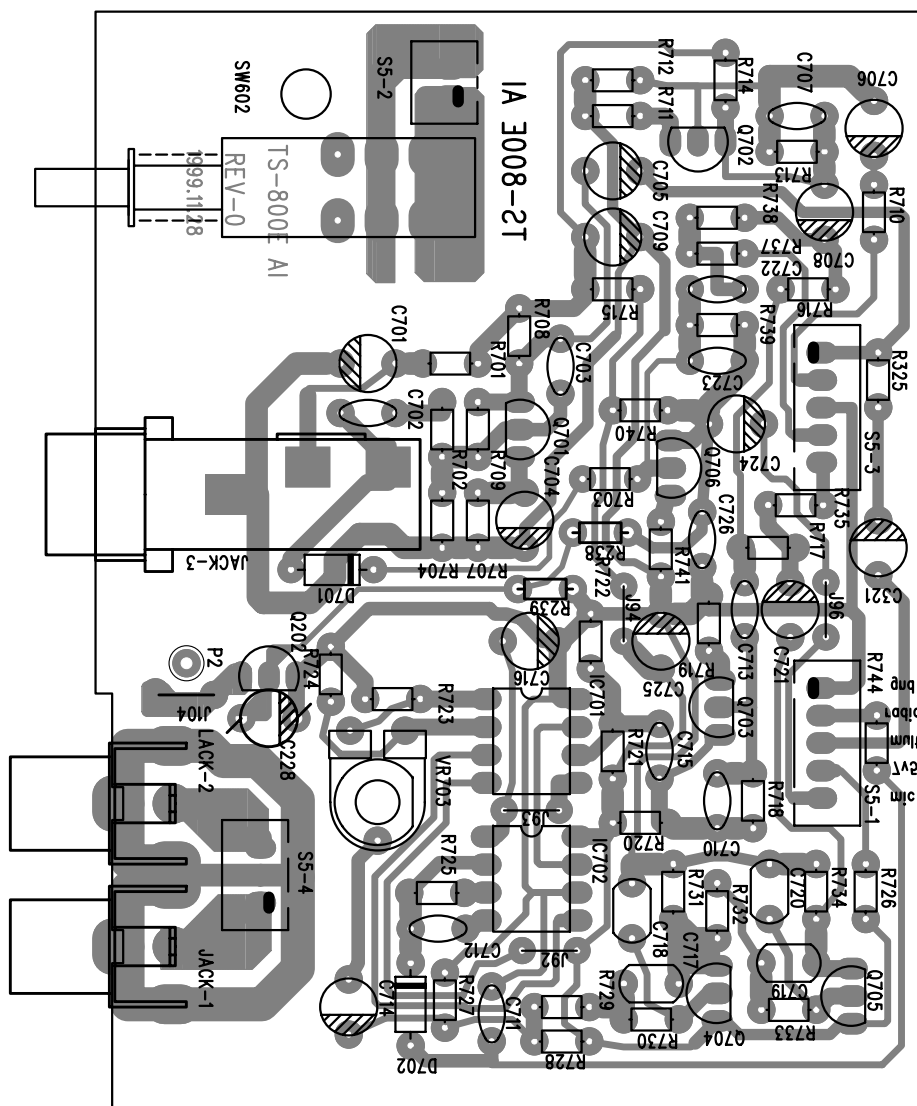
PHONES PCB



POWER LED PCB



POWER SWITCH PCB (AUX/MIC)

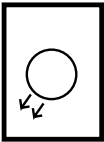


VFD PCB

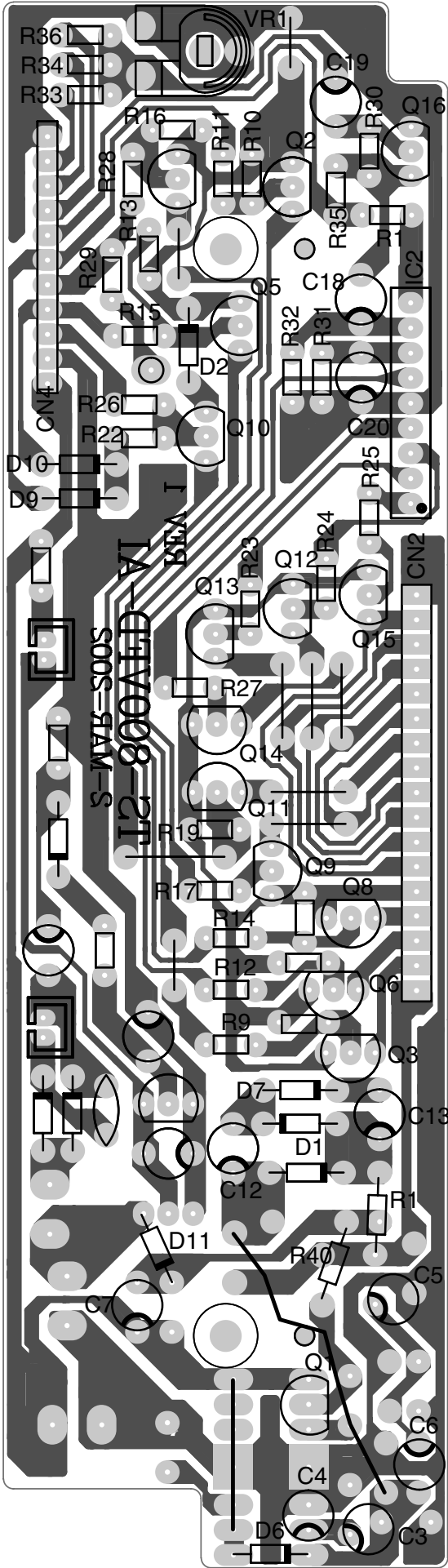


WIRING DIAGRAM (VFD PCB)
DISPLAY PCB, POINTER PCB

POINTER PCB

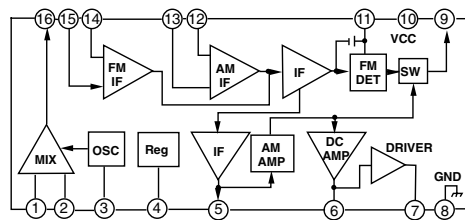


DISPLAY PCB

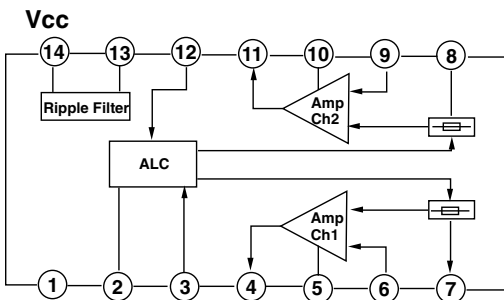


IC BLOCK DIAGRAM

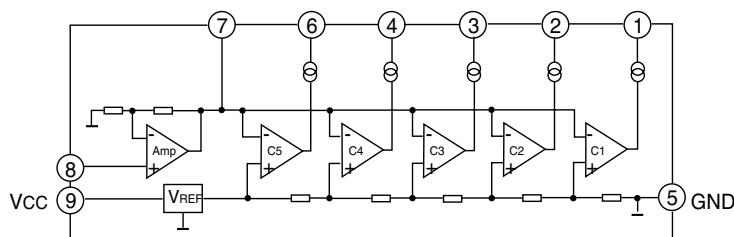
KIA6040P



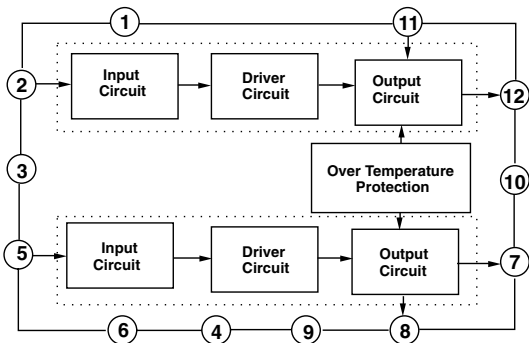
AN7312



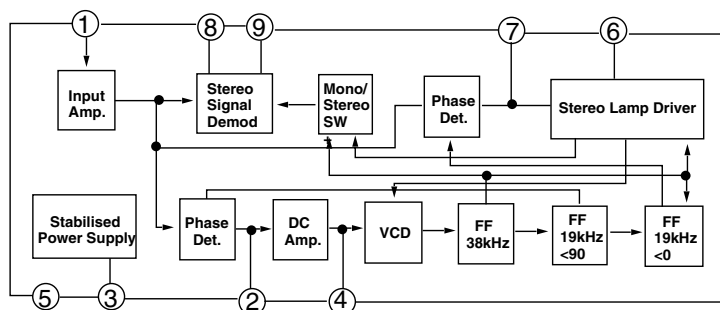
AN6884



AN7148



AN7420N



VOLTAGE CHART

IC101 KIA6040

PIN	1	2	3	4	5	6	7	8	9	10	11	12	13	14	15	16
	0(1.5)	0.56(1.5)	2.3	2.3	0.9	0.9	0	G	1.4	5.6	5.6	1.4	1.4	1.4	1.4	5.6

IC102 KIA6043

PIN	1	2	3	4	5	6	7	8	9
	2.9	3.4	4.8	4.1	G	4.2	4.1	2.4	2.4

IC202 AN7312

PIN	1	2	3	4	5	6	7	8	9	10	11	12	13	14
	G	0(3)	0	3.3	1.3	1.25	0	0	1.25	1.3	3.3	0	6.5	6.6

IC501 PT2253A

PIN	1	2	3	4	5	6	7	8	9	10	11	12	13	14	15	16
	G	3.3	3.3	3.3	3.3	3.3	7.1	6.6	6.8	6.6	3.3	3.3	3.3	3.3	3.3	6.6

IC502 PT2249A

PIN	1	2	3	4	5	6	7	8	9	10	11	12	13	14	15	16
	G	5	0	0	0	0	0	0	0	0	0	0	G	5.4	2.4	5.5

IC503 TC4013BP

PIN	1	2	3	4	5	6	7	8	9	10	11	12	13	14
	5.2	0	0	0	0	G	G	G	5.6	0	0	5.6	0	5.6

IC701 CD3207

PIN	1	2	3	4	5	6	7	8
	G	0	3.1	5.9	6.3	6.3	2.5	2.8

IC702 CD3102

PIN	1	2	3	4	5	6	7	8
	6.3	0	G	6.3	6.3	0	6.9	5.9

IC801 AN7148

PIN	1	2	3	4	5	6	7	8	9	10	11	12
	1.2	0	11.8	G	0	1.2	6.1	11.6	G	12	11.6	6.1

VOLTAGE CHART

UNIT: V

REF NO	TYPE	b	c	e
Q101	9018F	1.35	2.65	0.65
Q102	9018G	1.05	2.7	0.5
Q103	9015C	5.75(5)	0(5.66)	5.73(5.7)
Q301	9014C	2.8	5.5	2.2
Q302	9014C	2.8	5.5	2.2
Q303	9014C	0(2.8)	5.5	2.2
Q304	9014C	0.6	2.5	0
Q305	9014C	0.6	0	0
Q306	9014C	0	6	0
Q307	9014C	0.7	0.2	0
Q401	9014C	2.6	4.5	2
Q402	9014C	2.6	4.5	2
Q403	9014C	4.6	6	4
Q404	9014C	4.6	6	4
Q405	9014C	4.6	6	4
Q406	9014C	4.6	6	4
Q407	9014C	4.6	6	4
Q408	9014C	4.6	6	4
Q409	9014C	4.6	6	4
Q410	9014C	4.6	6	4
Q501	9014C	3	6.6	2.4
Q502	9014C	3	6.6	2.4
Q503	9014C	0	6.6	0
Q504	9014C	0	6.6	0
Q505	9014C	0.6	5.6	0
Q506	9014C	0(2.5)	7.5	0(1.8)
Q507	9014C	1.4	0.7	0.6
Q508	S8550D	11.3	11.8	12
Q509	9014C	0(0.7)	0	0
Q510	9014C	0(0.7)	0	0
Q601	B772	11.2	7.5	11.8
Q602	9014C	7.5	11.2	6.9
Q603	S8050D	7.5	11.8	7
Q701	9014C	1.3	2.3	0.7
Q702	9014C	0.8	3.4	0.2
Q703	9014C	0.7	3.6	0.1
Q704	9014C	4.3	6.5	3.8
Q705	9014C	3.7	6.5	3.2
Q706	9014C	0.7	2.4	0.1

